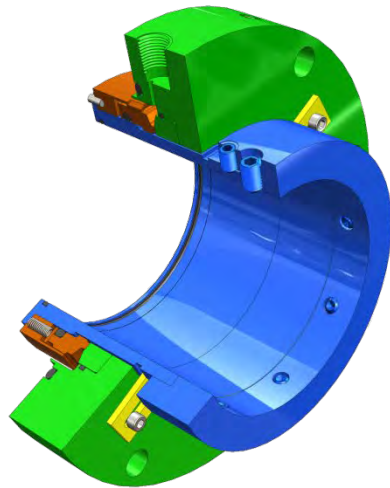
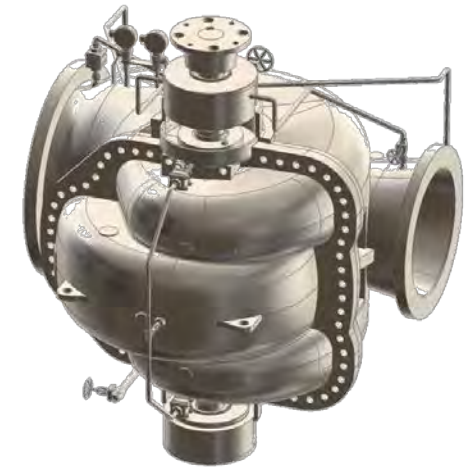


# Tori Seal Mechanical Seal Case Histories

## Chilled Water Pump

Plant Type:	<i>District Cooling Water</i>
Pump Model:	<i>Vertical Double Suction Split Case Pump</i>
Service:	<i>Chilled Water Pump</i>
Liquid:	<i>Chilled Water</i>
Pumping Temperature:	<i>0-50°C</i>
Flow Rate:	<i>Unknown</i>
Total Head:	<i>Unknown</i>



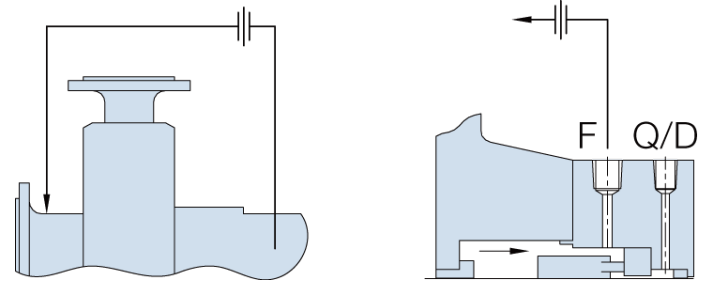
Seal Type:	<b><i>MB2704 Rotating Balanced Cartridge Seal</i></b>
Shaft Size:	<i>90mm</i>
Metallurgy:	<i>304SS Stainless Steel</i>
Face Materials:	<i>Carbon/ Silicon Carbide</i>
Elastomers:	<i>Viton</i>
Seal Pressure:	<i>20.22-18.36 kg/cm<sup>2</sup>G</i>
Pump Speed:	<i>1,490 rpm</i>
Face Velocity:	<i>4,7 m/s</i>
API Plan:	<i>13 (Reverse Flushing)</i>



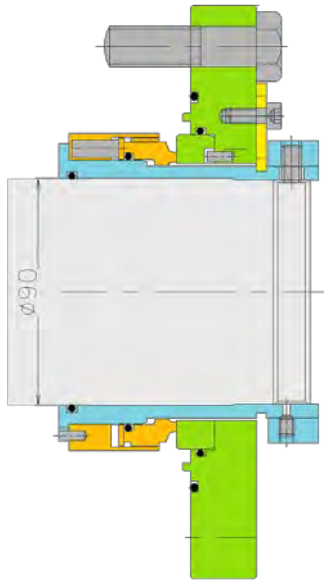
# Tori Seal Mechanical Seal Case Histories

The Tori Seal offered had to compete with two other seal manufacturers, one of which is a large world renowned mechanical seal company (supplier of the existing seal). In addition to the seal quality which could not be a compromise, the price and delivery times were compared.

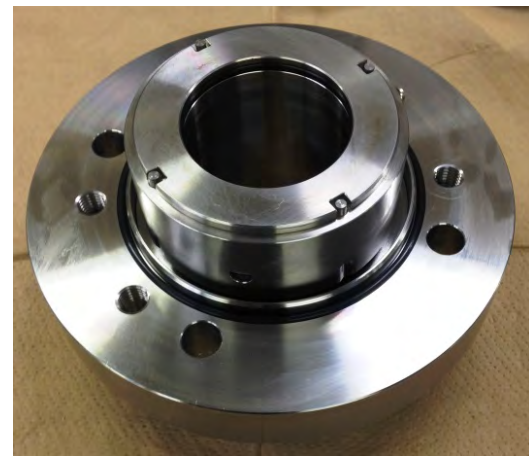
Tori Seal was able to offer a more price competitive seal whilst meeting the customer's delivery requirements. Furthermore, all existing seal dimensions were taken into account therefore no modifications were required to the pump and the new seal fitted straight into the stuffing box.



Plan 13 Reverse Flushing



Tori Seal MB2704



Tori Seal MB2704

